

CENTURION MIL-SPEC MOBILE TOWER SPECIFICATIONS

LP-X MOBILE APPLICATION GATEWAYS

OVERVIEW

The Centurion Low Profile Series is a rugged commercial mobile tower platform designed for military applications. The series are capable of being transported by aircraft, helicopter, FMTV, and LMTV.

The Low Profile Series has options for both 12 volt and 24 volt wiring in addition to electric or hydraulic surge brakes to better suit the transportation of vehicles in the theatre of operations. Mil-Spec tie downs and aerial lifting points are included. HMMWV compatible tires are standard for off-road conditions. Optional "run-flat" wheel inserts are available, as are outdoor cabinets, cable reels, and other application-specific accessories. Centurion Low Profile Series mobile towers are exceptional performers in extremely harsh environments.



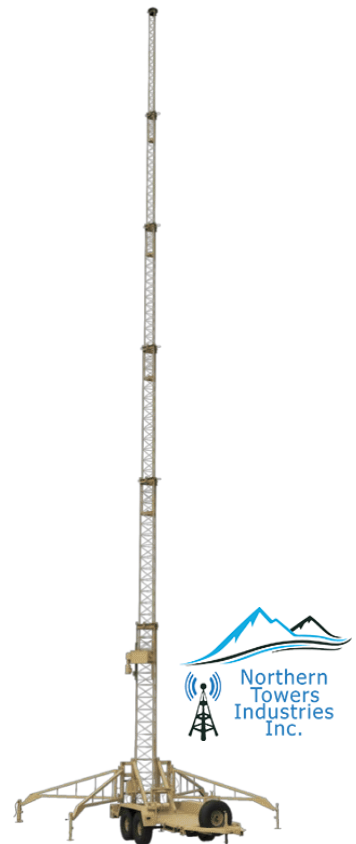
All Northern Towers Industries towers are designed using industry-standard tower analysis and design software to allow for full wind-loading and structural design. All cabling used to raise, lower, and guy these towers is aircraft-grade. The strength required for each application is determined using TIA/EIA-222G specification. Sheaves are constructed of solid steel for extra strength. All bolts are made of Grade-5 and/or Grade-8 steel. AWS D1.1 Welding Procedures are used in fabrication of the tower.

FEATURES

- 32 m maximum height
- Custom engineered guying system
- 294 kg lifting capacity
- Mil-Spec tie downs and aerial lifting points
- Standard HMMWV-compatible off-road tires
- Multiple features including limit switches, safety bar, and momentary switch activated control panel are standard and improve operational safety
- Choice of 12 V or 24 V wiring
- Choice of electronic or hydraulic surge brakes

OPTIONAL SITE SOLUTIONS

- Power Distribution – Diesel generator for use in remote areas
- Surveillance and Monitoring – Camera mounting for 360° security
- Network – Antennas can be mounted to enhance site comms
- Lighting – Light mounting system that supports up to 18x 1500 W metal halide light assemblies
- Public Address & Siren Systems



SPECIFICATIONS

Tower Specifications	LP-45	LP-60	LP-85	LP-106	LP-120
Hot-Dipped Galvanized Tower Sections	3	4	5	6	6
Main Winch Gear Reducer - Direct Drive	Y	Y	Y	Y	Y
Main Winch Electric Motor	1.5HP	1.5HP	1.5HP	1.5HP	1.5HP
Extreme Weather Motor	Y	Y	Y	Y	Y
Tower Tilt Motor	2HP	-	-	-	-
Tower Tilt Mechanism	2HP	Hydraulic 2" Cylinder or electric Winch	Hydraulic 2" Cylinder or electric Winch	Hydraulic 2" Cylinder or electric Winch	Hydraulic 2" Cylinder or electric Winch
Galvanized Lifting Cables: (Section A)	3/8" / 9.5mm	3/8" / 9.5mm	3/8" / 9.5mm	3/8" / 9.5mm	3/8" / 9.5mm
Galvanized Lifting Cables: (Section B)	5/16" / 7.9mm	5/16" / 7.9mm	5/16" / 7.9mm	5/16" / 7.9mm	5/16" / 7.9mm
Galvanized Lifting Cables: (Section C)	5/16" / 7.9mm	5/16" / 7.9mm	5/16" / 7.9mm	5/16" / 7.9mm	5/16" / 7.9mm
Galvanized Lifting Cables: (Section D)	N/A	5/16" / 7.9mm	5/16" / 7.9mm	5/16" / 7.9mm	5/16" / 7.9mm
Galvanized Lifting Cables: (Section E)	N/A	N/A	5/16" / 7.9mm	5/16" / 7.9mm	5/16" / 7.9mm
Galvanized Lifting Cables: (Section F)	N/A	N/A	N/A	5/16" / 7.9mm	5/16" / 7.9mm
Galvanized Guy Cables	N/A	3/8" / 9.5mm	3/8" / 9.5mm	3/8" / 9.5mm	3/8" / 9.5mm
Redundant Cabling Per Tower Section	Y (3)	Y (3)	Y (3)	Y (3)	Y (3)
Stainless Steel Rollers	Y	Y	Y	Y	Y
NEMA-4 Rated Control Panel	Y	Y	Y	Y	Y
Safety Limit Switches	Y	Y	Y	Y	Y
Tower Power Requirements ¹	110VAC / 60Hz ²	110VAC / 60Hz ²	110VAC / 60Hz ²	110VAC / 60Hz ²	110VAC / 60Hz ²
Tower Minimum Operational Height	25' / 7.6m	25' / 7.6m	29' / 8.8m	29' / 8.8m	29' / 8.8m
Tower Maximum Operational Height ⁴	45' / 13.7m ¹	60' / 18.2m ¹	85' / 25.9m ¹	106' / 32.3m ¹	106' / 32.3m ¹
Operational Setup Time	20 minutes	20 minutes	30 minutes	30 minutes	30 minutes
Maximum Tower Lifting Capacity*	650 lbs / 294kg	650 lbs / 294kg	650 lbs / 294kg	650 lbs / 294kg	650 lbs / 294kg
Maximum Wind Load (tower only)**	80mph / 128kph	80mph / 128kph	80mph / 128kph	80mph / 128kph	80mph / 128kph
Erectable Wind Speed	30mph / 48kph	30mph / 48kph	30mph / 48kph	30mph / 48kph	30mph / 48kph
Adjustable 3-Sector 4' Antenna Mount - Optional	1	1	1	1	1
Platform Grounding Package	Optional	Optional	Optional	Optional	Optional
Trailer Specifications					
Overall Trailer Length	23' / 7m	23' / 7m	23' / 7m	28' / 8.5m	28' / 8.5m
Overall Trailer Width	8'3" / 2.5m	8'3" / 2.5m	8'3" / 2.5m	8'3" / 2.5m	8'3" / 2.5m
Overall Tower & Trailer Length - Transportation Mode	28' / 8.5m	28' / 8.5m	28' / 8.5m	32' / 9.7m	32' / 9.7m
Trailer Height - Transportation Mode	92" / 234cm	92" / 234cm	92" / 234cm	92" / 234cm	92" / 234cm
Dual Axle Suspension	7,000 lbs / 3,175kg	7,000 lbs / 3,175kg	7,000 lbs / 3,175kg	7,000 lbs / 3,175kg	7,000 lbs / 3,175kg
Gross Trailer Weight (GVWR)	14,000 lbs / 6,350kg	14,000 lbs / 6,350kg	14,000 lbs / 6,350kg	14,000 lbs / 6,350kg	14,000 lbs / 6,350kg
Transportable Weight	7,200 lbs / 3,265kg	7,700 lbs / 3,492kg	8,300 lbs / 3,764kg	8,900 lbs / 4,036kg	9,100 lbs / 4,127kg
Trailer Payload Weight	6,800 lbs / 3,084kg	6,300 lbs / 2,857kg	5,700 lbs / 2,585kg	5,100 lbs / 2,313kg	4,900 lbs / 2,222kg
Mil-Spec Tie Downs	6	6	6	6	6
Mil-Spec Aerial Lift Points	4	4	4	4	4
One Piece Fender Wells	2	2	2	2	2
Brake Options	Electric / Hydraulic	Electric / Hydraulic	Electric / Hydraulic	Electric / Hydraulic	Electric / Hydraulic
HMMWV Compatible / Commercial Tire Optional	37X12.50R16.5	37X12.50R16.5	37X12.50R16.5	37X12.50R16.5	37X12.50R16.5
Wheel Size	16.5 x 8.25	16.5 x 8.25	16.5 x 8.25	16.5 x 8.25	16.5 x 8.25
Spare tire	1	1	1	1	1
DOT - Break Away Kit	Y	Y	Y	Y	Y
DOT - Safety Chains	Y	Y	Y	Y	Y
DOT - Lighting System / Convoy Lighting Optional	Y	Y	Y	Y	Y
Trailer Electrical System	12 / 24VDC	12 / 24VDC	12 / 24VDC	12 / 24VDC	12 / 24VDC
Trailer Hitch Options	2-5/16" / Pintle	2-5/16" / Pintle	2-5/16" / Pintle	2-5/16" / Pintle	2-5/16" / Pintle
Storage Box	Y	Y	Y	Y	Y
Premium Industrial Enamel / CARC Paint Optional	Desert Tan / NATO Green	Desert Tan / NATO Green	Desert Tan / NATO Green	Desert Tan / NATO Green	Desert Tan / NATO Green