

AT90 CLIMBABLE ALUMINIUM MONOPOLE

AP-RM-AT90-12 ROOF MOUNTED MONOPOLE, 12 METRES

OVERVIEW

Designed as a clever replacement to standard roof mounted 'telomasts', APAC manufacture a lightweight guyed monopole with footpegs to allow climbing to make adjustment to the headload. APAC's AT90 climbable monopoles are an ideal substitute for the more visually intrusive aluminium lattice towers as their lighter, thinner profile is more similar to that of traditional telomast designs.

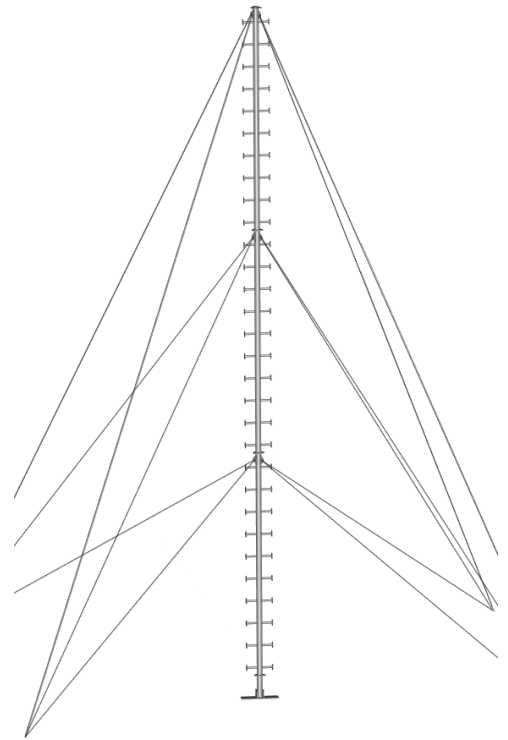
Each footpeg is capped with a circular aluminium disc to act as a lanyard attachment point as well as a foot-slip catch. The circular disc is also far safer than some of the sharper foot peg designs which risk injury should a fall occur.

Your safety is most important - the tower base comprises of a 50 tonne rated, fully machined billet aluminium universal-joint. This universal-joint design allows axis locking to permit safe and easy raising, as well as the components machined from solid structural grade aluminium providing absolute peace of mind of tower integrity.

Designed and built by APAC Infrastructure in Sunshine Coast, Queensland, allowing short leadtimes as well as full customisation services.

FEATURES

- 90 O/D x 3 mm aluminium monopole
- 300 mm step spacing
- 3000 mm section lengths
- Very light weight, easily raised
- Machined 50 tonne universal-joint base
- Low maintenance aluminium construction
- Stackable modular mast to a height of 12 m
- 100% Australian made



SPECIFICATION

| PARAMETER | AP-RM-AT90-12 |
|------------------------------|--|
| Extended Height | 12.3 m |
| Typical Footprint | 14200 mm \varnothing (at ideal 60° guying) |
| Approximate Erected Weight | 40 kg |
| Operating Temperature | -40 to +160 °C |
| Wind Survivability | Dependent on configuration, enquire |
| Monopole Sections | 4 |
| Section Length | 3000 mm |
| Monopole Diameter | 90 mm |
| Lattice Material | 6005 T5 Aluminium Alloy, 90x3 mm CHS leg, 32x3 mm pegs |
| Lattice Finish | Raw Aluminium |
| Guy Kit | 4 @ 6 m, 4 @ 9 m, 4 @ 15 m, 4 @ 21. 32 thimbles, 16 turnbuckles, 32 wire saddles |
| Guy Wires | 6 mm, Class 7x19, Grade 2070, Galvanised Steel |
| Universal Joint Construction | Machined Billet, 6005 T5 Aluminium Alloy |
| Universal Joint Finish | Raw Aluminium |

