

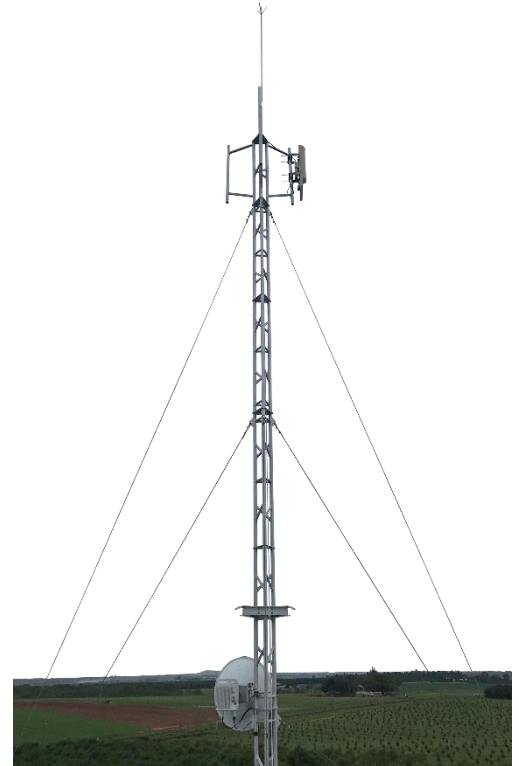
# AL220 ALUMINIUM ROOF LATTICE TOWER SPECIFICATIONS

## AP-RLT-AL220-9 ROOF TOWER, 9.3 METRES

### OVERVIEW

With the exploding demand for wireless point to multipoint services, WISP's have been under increasing pressure to maximise site and spectrum utilisation. Often the challenge faced is reaching the largest number of clients with a limited vantage point from the fibre POP - traditionally tall 'telomasts' have been used but are unsuitable for multiple sectors and most certainly unsuitable for high gain dishes. APAC met the challenge with an ultra-lightweight, climbable, aluminium lattice tower that could be easily raised on a roof with a small team.

These roof lattice towers consist of a large universal-joint base, modular 3.1 metre lattice sections, guy wires, and your choice of headframe. The 3.1 m sections are easily stacked meaning roof towers can be built as small as 3.1 metres with full structural engineering certification up to 18.6 metres. APAC's aluminium lattice tower features three upright columns made from 42x3 round tube with 25x3 round tube lattice welded in between by certified boom welders, providing incredible strength while retaining a lightweight design that can support your technician to climb the full 18.6 metres.



Capable of mounting a range of lighting, CCTV, sensors, and industrial monitoring equipment. Headframes are available to support a range of radio system configurations from ABAB/ABCABC multipoint, to a full LTE eNodeB.

### FEATURES

- Lightweight, easy to raise
- Fully engineered design
- Climbable to full 9 metres
- Machined 50 tonne rated universal-joint base
- 6 mm 7x19 galvanised steel guy wires
- 3100 mm section lengths
- Low maintenance aluminium construction

### ENGINEERING

- Aluminium fabrication in accordance to AS1664
- Aluminium welding in accordance to AS1665
- 7/16" Zinc or Stainless Steel bolts in accordance to ISO 3506 U.N.O.
- Guy cables in accordance to AS3569, Class 7x19 Grade 2070
- Guy wire preload tension to 1.0 kN
- Cable joins and attachments in accordance to AS2579
- Structure classification per AS3995 is Type II

## SPECIFICATION

PARAMETER	AP-RLT-AL220-9
Extended Height	9.6 m
Typical Footprint	10740 mm $\varnothing$ (at ideal 60° guying)
Approximate Erected Weight	41.4 kg
Operating Temperature	-40 to +160 °C
Wind Survivability	Dependent on configuration, enquire
Lattice Sections	3
Module Section Length	3100 mm
Module Width	210 mm
Module Face Width	180 mm
Lattice Material	6005 T5 Aluminium Alloy, 42x3 mm CHS legs, 25x3 mm braces
Lattice Finish	Raw Aluminium
Guy Kit	3 @ 6 m, 3 @ 9 m, 3 @ 15 m, 18 thimbles, 9 turnbuckles, 18 wire saddles
Guy Wires	6 mm, Class 7x19, Grade 2070, Galvanised Steel
Universal Joint Construction	Machined Billet, 6005 T5 Aluminium Alloy
Universal Joint Finish	Raw Aluminium

