

# AL340 ALUMINIUM FREE-STANDING LATTICE TOWER

AP-FLT-AL340 FREE-STANDING TOWER, 6.2 METRES

## OVERVIEW

APAC's modular free-standing aluminium lattice towers are manufactured locally in Queensland in 3.1 metre sections allowing effortless transport, meaning total leadtime can be measured in days - not weeks or months. As a lightweight structure the towers can be built with a small crew and minimal plant, with smaller towers even able to be assembled by hand.

These modular lattice towers consist of a large base plate, modular 3.1 metre lattice sections, and a choice of headframe. The 3.1 m sections are easily stacked meaning towers can be built as small as 3.1 metres with structural engineering certification up to 6.2 metres. APAC's aluminium lattice tower features three upright columns made from 50x4 CHS with 25x3 CHS lattice welded in between by certified boom welders, providing incredible strength while retaining a lightweight design that can support your technician to climb the full height.

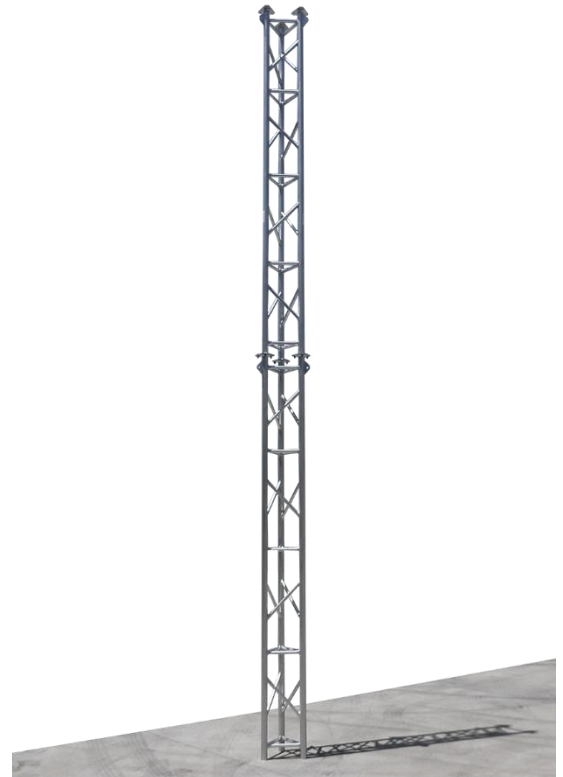
Headframes are available to support a range of wind turbines, camera systems, and telecommunications configurations. Guy wiring and torque arms (anti-twist) available for applications requiring large microwave dishes, radars, or systems with large offsets.

## FEATURES

- Lightweight stackable design
- 3.1 to 6.2 m tower heights
- 340 mm wide body
- 3100 mm modular lengths
- 50 x 4 mm aluminium CHS legs
- 25 x 3 mm lattice structure
- Low maintenance aluminium construction

## ENGINEERING

- Aluminium fabrication in accordance to AS1664
- Aluminium welding in accordance to AS1665
- 7/16" Zinc or Stainless Steel bolts in accordance to ISO 3506 U.N.O.
- Structure classification per AS3995 is Type II



## SPECIFICATION

PARAMETER	AP-FLT-AL340
Extended Height	6.2 m
Typical Footprint	Not applicable
Approximate Erected Weight	44 kg
Operating Temperature	-40 to +160 °C
Wind Survivability	Dependent on configuration, enquire
Lattice Sections	2
Lattice Section Length	3100 mm
Lattice Face Width	340 mm
Lattice Material	6005 T5 Aluminium Alloy, 50 x 4 mm CHS legs, 25 x 3 mm struts
Lattice Finish	Raw Aluminium
Base Plate	6005 T5 Aluminium Alloy
Footing	Not supplied
Guy Wires	Optional, not supplied

