

AL220 PORTABLE TRIPOD LATTICE TOWER

AP-TLT-AL220-WR11 TRIPOD TOWER, 11 METRES

OVERVIEW

APAC's tripod-base aluminium lattice towers are manufactured locally in Queensland in 3.1 metre sections allowing effortless transport, meaning total leadtime can be measured in days - not weeks or months. Constructed with a bolt-together galvanised tripod and lightweight aluminium modules, this tripod tower is designed to be assembled by hand with just a few basic tools.

Able to be set up in under an hour with a team of two, APAC's tripod tower allows instant communications anywhere - no footing required. The bolt-together design means easy shipment to site, and the included winch allows raising and lowering of the tower eliminating the need for tower climbs.

This unique portable lattice tower consists of three bolt-together heavy duty galvanised outriggers, a 1.0 m galvanised base, three 3.1 metre lattice sections, guy wires, anchor footings/skids, and your choice of headframe. APAC's AL220 aluminium lattice modules feature three upright columns made from 42x3 CHS with 25x3 CHS lattice welded in between by certified boom welders, providing incredible strength while retaining a lightweight design.

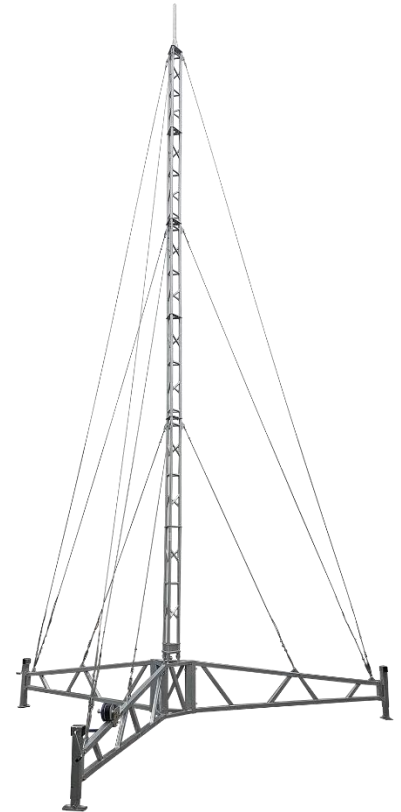
AL220 Tripod Tower is suitable for operation in wind speeds up to 160 km/h by anchoring the tripod legs using pegs or blocks to provide dead weight.

Capable of mounting a range of lighting, CCTV, sensors, and industrial monitoring equipment, this serviceable mast is popular in mining and construction where climbing structures can present a safety concern, eliminating the need for an elevated work platform or a certified tower rescue team to perform even simple adjustments. This mast is also ideal for combination with wind turbines, providing high elevation with maximum stability allowing the establishment of temporary power generation at your exploration site, construction office, or hardstand.

Headframes are available to support a range of wind turbines, radars, camera systems, and telecommunications configurations. Torque Arms (anti-twist) available for applications requiring large microwave antennas, or systems with large offsets.

FEATURES

- Lightweight aluminium lattice tower
- Heavy duty galvanised tripod outrigger base
- 3 metre outriggers
- 1000 kg outrigger legs
- 1.5 tonne winch
- <1 hour construction time
- Quick, simple winch raising (winch included)



SPECIFICATION

PARAMETER	AP-TLT-AL220-WR11
Maximum Height	11.05 m
Footprint	5317 x 5317 mm (3070 mm outrigger length)
Approximate Erected Weight	210 kg
Design Wind Speed	44.5 m/s (160 km/h) with +275 kg anchor per leg
Lattice Module Length	3100 mm
Lattice Module Width	220 mm
Lattice Module Weight	12.2 kg
Lattice Material	6005 T5 Aluminium Alloy, 40 x 3 mm CHS legs, 25 x 3 mm struts
Lattice Finish	Raw aluminium, acid cleaned
Tripod Material	50 x 50 mm, 2.5 mm wall SHS, AS 1163-C350L0
Tripod Finish	Hot dipped galvanised, Duragal to AS 4792
Outrigger Levelling Jacks	3 x 1000 kg
Guy Wires	6 mm, Class 7x19, Grade 2070, Galvanised Steel
Lattice Hinge Interface	3x Machined Billet 40 mm 6005 T5 Aluminium Alloy
Winch Capacity	1.5 tonne

