

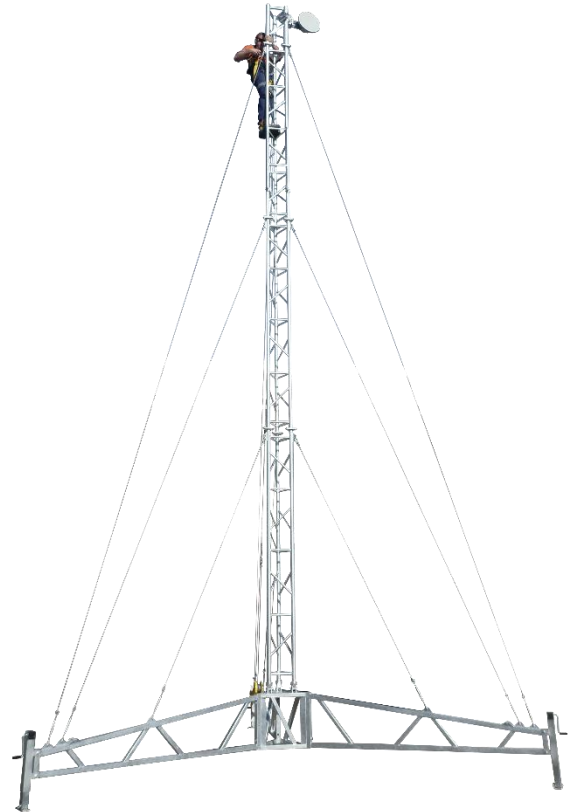
# AL340 PORTABLE TRIPOD LATTICE TOWER

AP-TLT-AL340-WR11 TRIPOD TOWER, 11 METRES

## OVERVIEW

APAC's tripod-base aluminium lattice towers are manufactured locally in Queensland in 3.1 metre sections allowing effortless transport, meaning total leadtime can be measured in days - not weeks or months. As a lightweight structure the towers can be built with a small crew and minimal plant, with smaller towers even able to be assembled by hand. The hinging tripod design is offered built with APAC's AL210 and AL340 lattice modules, with the AL340 series providing superior rigidity and tower heights up to 15.5 metres.

This unique portable lattice tower consists of three bolt-together heavy duty galvanised outriggers, a 1.0 metre galvanised base, three 3.1 metre lattice sections, guy wires, anchor footings/skids, and your choice of headframe. APAC's aluminium lattice tower features three upright columns made from 50x4 CHS with 25x3 CHS lattice welded in between by certified boom welders, providing incredible strength while retaining a lightweight design that can support your technician to climb the full 11 metres. The three hinge feet are machined from 76.2 mm solid billet 6005 T5 aluminium, providing unmatched strength with precision machining ensuring perfectly distributed load across bolts and galvanised receptacle.



Capable of mounting a range of lighting, CCTV, sensors, and industrial monitoring equipment, this serviceable mast is incredibly popular in mining and construction where climbing structures can present a safety concern, eliminating the need for an elevated work platform or a certified tower rescue team to perform even simple adjustments. This mast is also ideal for combination with wind turbines, providing high elevation with maximum stability allowing the establishment of temporary power generation at your exploration site, construction office, or hardstand.

Headframes are available to support a range of wind turbines, radars, camera systems, and telecommunications configurations. Torque Arms (anti-twist) available for applications requiring large microwave antennas, or systems with large offsets.

## FEATURES

- Rigid aluminium lattice tower
- Heavy duty galvanised tripod outrigger base
- 3 metre outriggers
- 1000 kg outrigger legs
- 1.5 tonne winch
- 1 hour construction time
- Quick, simple winch raising (winch included)

## SPECIFICATION

PARAMETER	AP-TLT-AL340-WR11
Extended Height	11.05 m (incl. headframe)
Footprint	7140 mm ø (3070 mm outrigger length)
Approximate Erected Weight	260 kg
Operating Temperature	-40 to +65 °C
Wind Survivability	Dependent on configuration, enquire
Lattice Section Length	3100 mm
Lattice Face Width	340 mm
Lattice Material	6005 T5 Aluminium Alloy, 50 x 4 mm CHS legs, 25 x 3 mm struts
Lattice Finish	Raw
Tripod Material	50 x 50 mm, 2.5 mm wall SHS, AS 1163-C350L0
Tripod Finish	Hot dipped galvanised, Duragal to AS 4792
Outrigger Levelling Jacks	3 x 1000 kg
Guy Wires	6 mm, 7x19 strand, Galvanised Steel
Winch Capacity	1.5 tonne

