

AL220 PORTABLE TRIPOD LATTICE TOWER

AP-TLT-AL220-HR4 TRIPOD, 4.7 METRES

OVERVIEW

APAC's tripod-base aluminium lattice towers are manufactured locally in Queensland in 3.1 metre sections allowing effortless transport, meaning total leadtime can be measured in days - not weeks or months. As an ultra-lightweight structure this portable system can be set up in a matter of minutes.

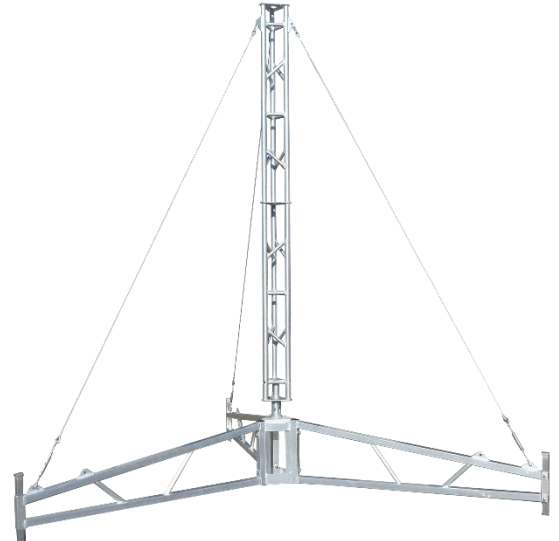
APAC's tripod tower allows instant height anywhere - no footing required. The bolt-together design means easy shipment to site, and the super lightweight design allows hand-raising and lowering of the tower eliminating the need for tower climbs.

This unique portable lattice tower consists of three sturdy bolt-together aluminium outriggers, a 600 mm aluminium base, a 3.1 metre AL220 lattice section, guy wires, and your choice of 1.0 metre headframe. APAC's AL220 aluminium lattice tower modules feature three upright columns made from 42x3 CHS with 25x3 CHS lattice welded in between by certified boom welders, providing incredible strength while retaining a lightweight design that can support your technician to climb the tripod tower.

Capable of mounting a range of lighting, CCTV, sensors, and industrial monitoring equipment, this serviceable mast is popular in mining and construction where climbing structures can present a safety concern.

FEATURES

- Lightweight hand-raised design
- Aluminium tripod outrigger base
- 4.7 m total height (3.1 m lattice)
- 220 mm wide body (180 mm faced)
- 3100 mm section lengths
- Solid aluminium billet hinge
- Low maintenance aluminium construction



SPECIFICATION

PARAMETER	AP-TLT-AL220-HR4
Extended Height	4.7 m
Footprint	4150 mm \varnothing
Approximate Erected Weight	32 kg
Operating Temperature	-40 to +160 °C
Wind Survivability	Dependent on configuration, enquire
Lattice Section Length	3100 mm
Lattice Face Width	220 mm
Lattice Material	6005 T5 Aluminium Alloy, 40 x 3 mm CHS legs, 25 x 3 mm struts
Lattice Finish	Raw, acid finish
Tripod Material	6063 T5 Aluminium Alloy, 50 x 50 mm, 2.5 mm wall SHS
Tripod Finish	Raw, acid finish
Outrigger Levelling Jacks	None, hammer-in pegs supplied
Guy Wires	6 mm, 7x19 strand, Galvanised Steel

