

GT1000 FREE-STANDING LATTICE TOWER

AP-FS-GT1000 FREE-STANDING TOWER, UP TO 30 METRES

OVERVIEW

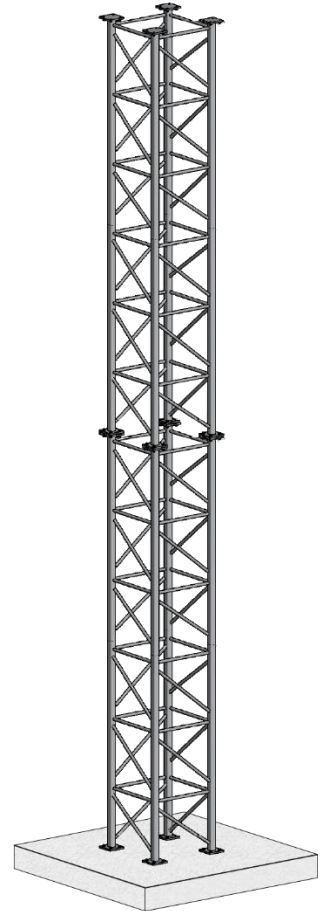
APAC's modular free-standing galvanised steel lattice towers are manufactured locally in Queensland in 6.0 metre, 350 kg sections, permitting comfortable handling during transport and assembly. The GT1000 module is a stackable design, to build towers up to 30 metres (five sections). The series' 1000 mm face width provides exceptional shear and torsional stiffness, necessary for many telecom applications. Fully-welded galvanised steel construction ensures the system can still be delivered at a low price point, but with minimal maintenance over its working life of 25 years - providing a superior total-cost-of-ownership.

GT1000 towers are a square-based (four-leg) self-supporting design, selected for minimal deflection and maximum durability in the extreme weather conditions our country faces. Ordinary free-standing galvanised towers have a tapered design, meaning final design height must be known well in advance of manufacturing, and each tower must be purchased as a single kit. GT1000 towers are designed to be manufactured and shipped as identical modules, arranged to any height as needed. The tower are ordinarily supplied in a galvanised finish, but can be supplied painted in aircraft colouring, or high visibility for mining applications.

The GT1000 series can be manufactured with mid and top-level platforms. Headframes are available to support a range of wind turbines, camera systems, radar, and telecommunications configurations.

FEATURES

- 1000 mm face width
- 89x89 mm SHS, four-leg (square) design
- 42x4 CHS lattice webbing
- 6000 mm section length, 350 kg weight
- Hot dip galvanised to AS/NZS 4680
- Modular, buildable to heights of 6 to 30 m
- 25 year design working life



SPECIFICATION

| PARAMETER | AP-FS-GT1000 |
|-----------------------|--|
| Maximum Height | 30 m |
| Typical Footprint | 1200 x 1200 mm |
| Design Wind Speed | 70 m/s (Wind Regions A to C) |
| Max. Lattice Modules | 5 |
| Lattice Module Length | 6000 mm |
| Lattice Module Width | 1000 mm |
| Lattice Module Weight | 350 kg |
| Module Material | Grade C350 Steel, 89x89x5.0 mm SHS legs, 42.4x4 mm CHS webbing |
| Lattice Finish | Hot Dip Galvanised to AS/NZS 4680 |
| Base Plate | 20 mm Mild Steel |
| Fixings | M20 Bolts, M24 Anchor Bolts |
| Class | AS3995 Class C |

